



NRG 75 CR

NRG Energy Efficient Building Systems, is pleased to advise all building professionals, Architects/ Building Designers/ Draftsman/ Developers and Builders, that NRG Building Systems now has the smart choice option of NRG Greenboard™ cladding "Cavity Release" batten system, (NRG 75 CR).

IMMEDIATE BENEFITS:

- NRG exterior wall R-Value = 3.31R
- Air rating cavity
- Moisture release management system
- CodeMark™ Accreditation, Building Code of Australia approved certification

A comprehensive specification and installation guide is available following this introduction, covering all section details/ NRG 75 CR Specified Components and Essential Related Trade Practices.

Total Thermal R-Value 3.48

p. 07 5535 3111 f. 07 5535 3222
e. sales@nrggreenboard.com
w. www.nrggreenboard.com

PO Box 2405, Burleigh MDC QLD 4220
Factory 4, 32-38 Dover Drive, West Burleigh QLD 4220



NRG 75 CR

SPECIFIED COMPONENTS FOR CAVITY RELEASE

- 1/ 75mm NRG Greenboard™ 2480 x 1200
- 2/ NRG 125mm x 10 Gauge Bugle Head Screws
- 3/ NRG Greenboard™ 40mm Washers
- 4/ NRG 35mm x 25mm EPS Battens
- 5/ Sisalation: Wall Wrap (Breather)
- 6/ NRG PVC Render Bead System
- 7/ Bostik No More Nails
- 8/ Bostik Seal 'n' Flex (polyurethane sealant)
- 9/ NRG Polymer Modified Render and Fibreglass Reinforced Mesh
- 10/ NRG Acrylic Texture

p. 07 5535 3111 f. 07 5535 3222
e. sales@nrggreenboard.com
w. www.nrggreenboard.com

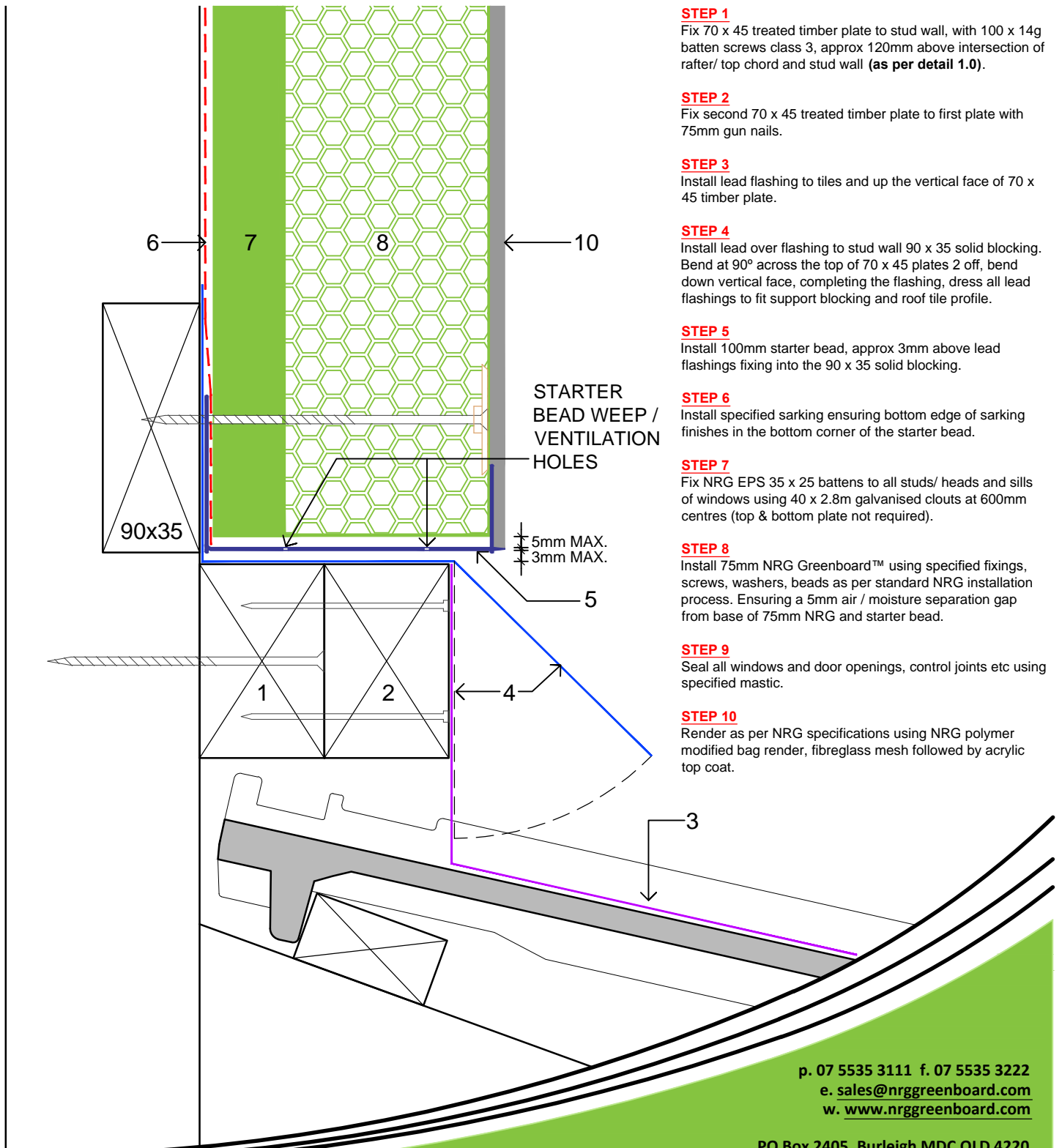
PO Box 2405, Burleigh MDC QLD 4220
Factory 4, 32-38 Dover Drive, West Burleigh QLD 4220

NRG 75 CR

ESSENTIAL TRADE RELATED PRACTICES

- Overall **NRG 75 CR** Thickness 100mm + selected render system.
- Slab Rebate Dimensions.
- Termite Management System in Rebate.
- Window/ Door Reveal Width.
- First Floor, Subfloor Framing Setback.
- Fascia (zero eave) Dimension Setout, Frame to Fascia.
- Double 70 x 45 Pole Plate Over Lower Roof Areas as per **Detail 1.0 and 1.1**.
- 2 Piece Sheet Metal Apron Flashing **as per Detail 1.1**.
- 2 Piece Lead Flashing Over Tiled Roof Lines. (Note: Solid 90 x 35 blocking to frame as lead flashing vertical support **as per Detail 1.0**).
- Additional Solid Blocking for Fixing Downpipes, Hose Reels, Taps, Lightfittings, Air Conditioning Units etc.
- Installation of Sarking to Manufacturers Specification and Over Laps.
- See Details 1.0, 1.1 and 2.0** Section Details with Sequential step x Step Guide for **NRG 75 CR**.

NRG 75 CR
OVER TILE ROOF LINE
DETAIL 1.0



STEP 1
 Fix 70 x 45 treated timber plate to stud wall, with 100 x 14g batten screws class 3, approx 120mm above intersection of rafter/ top chord and stud wall (as per detail 1.0).

STEP 2
 Fix second 70 x 45 treated timber plate to first plate with 75mm gun nails.

STEP 3
 Install lead flashing to tiles and up the vertical face of 70 x 45 timber plate.

STEP 4
 Install lead over flashing to stud wall 90 x 35 solid blocking. Bend at 90° across the top of 70 x 45 plates 2 off, bend down vertical face, completing the flashing, dress all lead flashings to fit support blocking and roof tile profile.

STEP 5
 Install 100mm starter bead, approx 3mm above lead flashings fixing into the 90 x 35 solid blocking.

STEP 6
 Install specified sarking ensuring bottom edge of sarking finishes in the bottom corner of the starter bead.

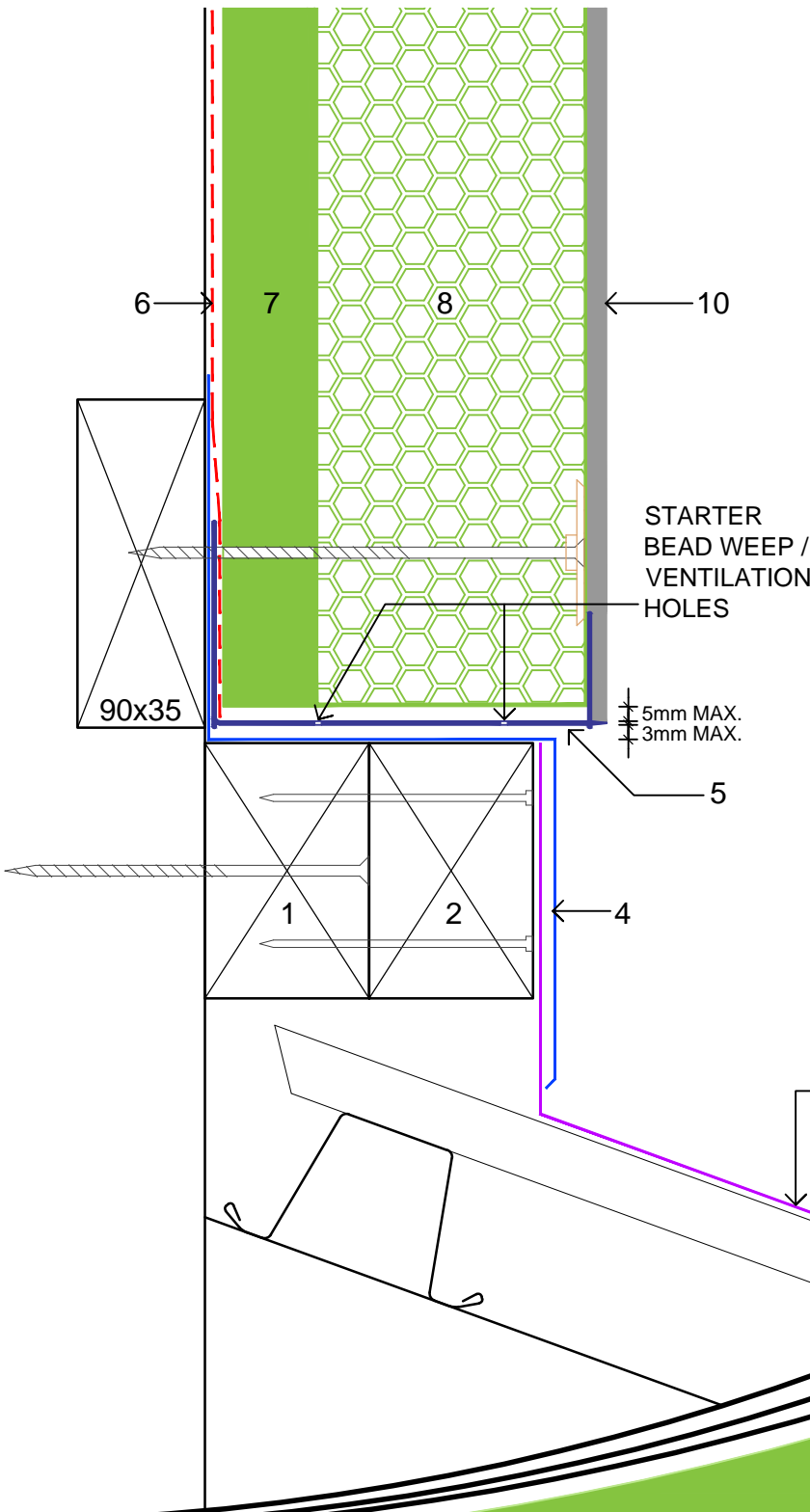
STEP 7
 Fix NRG EPS 35 x 25 battens to all studs/ heads and sills of windows using 40 x 2.8m galvanised clouts at 600mm centres (top & bottom plate not required).

STEP 8
 Install 75mm NRG Greenboard™ using specified fixings, screws, washers, beads as per standard NRG installation process. Ensuring a 5mm air / moisture separation gap from base of 75mm NRG and starter bead.

STEP 9
 Seal all windows and door openings, control joints etc using specified mastic.

STEP 10
 Render as per NRG specifications using NRG polymer modified bag render, fibreglass mesh followed by acrylic top coat.

NRG 75 CR
OVER SHEET METAL ROOF LINE
DETAIL 1.1



STEP 1

Fix 70 x 45 treated timber plate to stud wall, with 100 x 14g batten screws class 3, approx 120mm above intersection of rafter/ top chord and stud wall (as per detail 1.1).

STEP 2

Fix second 70 x 45 treated timber plate to first plate with 75mm gun nails.

STEP 3

Install sheet metal apron flashing to sheet roof and up the vertical face of 70 x 45 timber plate.

STEP 4

Install sheet metal over flashing to stud wall 90 x 35 solid blocking, insure overflashing fits neatly to apron flashing.

STEP 5

Install 100mm starter bead, approx 3mm above sheet metal flashings fixing into the 90 x 35 solid blocking.

STEP 6

Install specified sarking ensuring bottom edge of sarking finishes in the bottom corner of the starter bead.

STEP 7

Fix NRG EPS 35 x 25 battens to all studs/ heads and sills of windows using 40 x 2.8m galvanised clouts at 600mm centres (top & bottom plate not required).

STEP 8

Install 75mm NRG Greenboard™ using specified fixings, screws, washers, beads as per standard NRG installation process. Ensuring a 5mm air / moisture separation gap from base of 75mm NRG and starter bead.

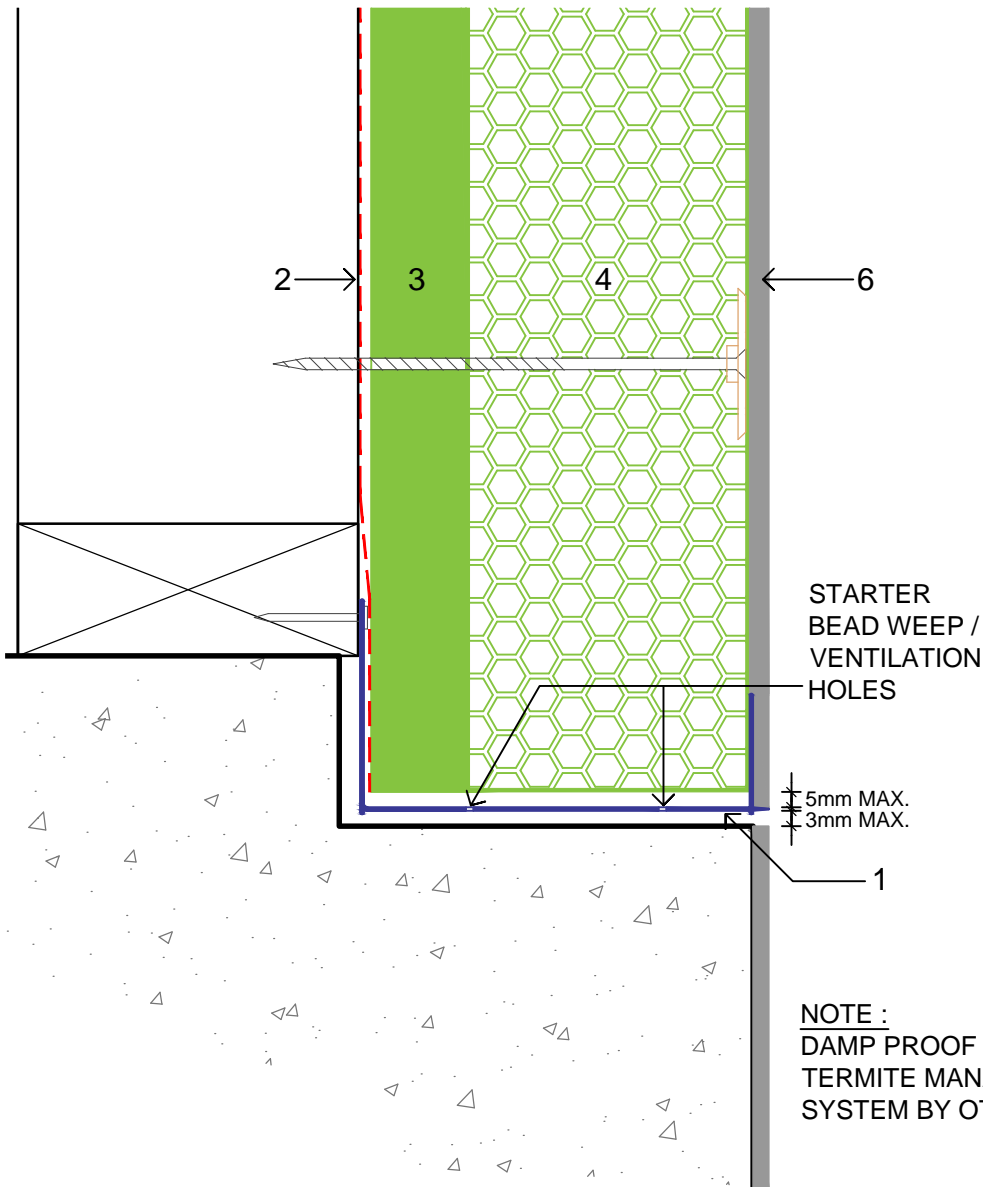
STEP 9

Seal all windows and door openings, control joints etc using specified mastic.

STEP 10

Render as per NRG specifications using NRG polymer modified bag render, fibreglass mesh followed by acrylic top coat.

NRG 75 CR
SLAB EDGE DETAIL
DETAIL 2.0



STEP 1

Install 100mm starter bead, 3.0mm to 5.0mm above rebated slab edge, fix back of bead to bottom plate using 30mm galvanised clouts (as per detail 2.0).

STEP 2

Install specified sarking, ensuring bottom edge of sarking finishes in the bottom corner of starter bead.

STEP 3

Fix NRG EPS 35 x 25mm battens to all studs/heads and sills of windows using 40 x 2.8mm galvanised clouts at 600mm centres. (top & bottom plate not required).

STEP 4

Install 75mm NRG Greenboard™ using specified fixing screws, washers, as per standard NRG installation process. Ensuring a 5mm air / moisture separation gap from base of 75mm NRG and starter bead.

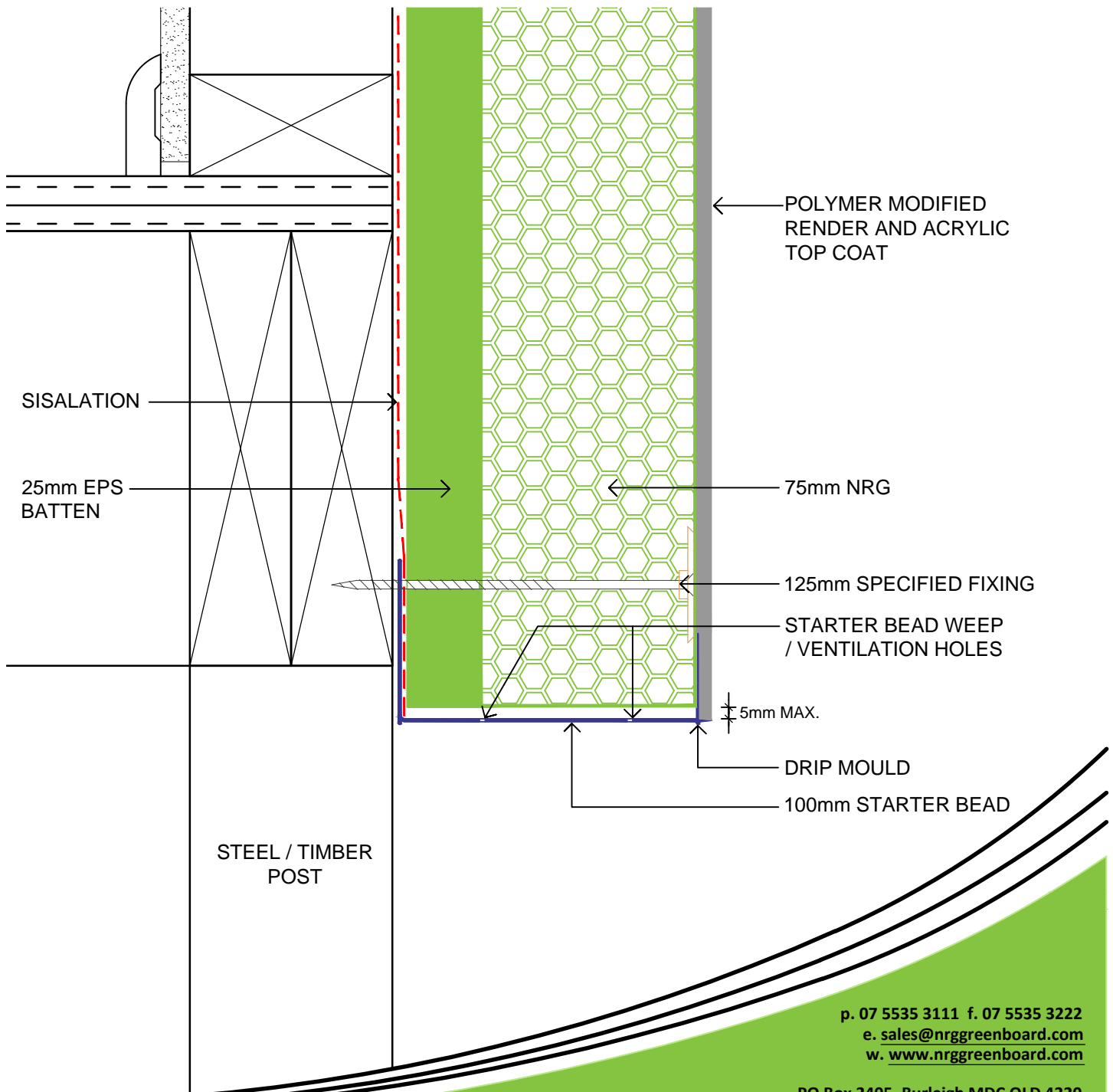
STEP 5

Seal all windows and door openings, control joints etc, using specified mastic.

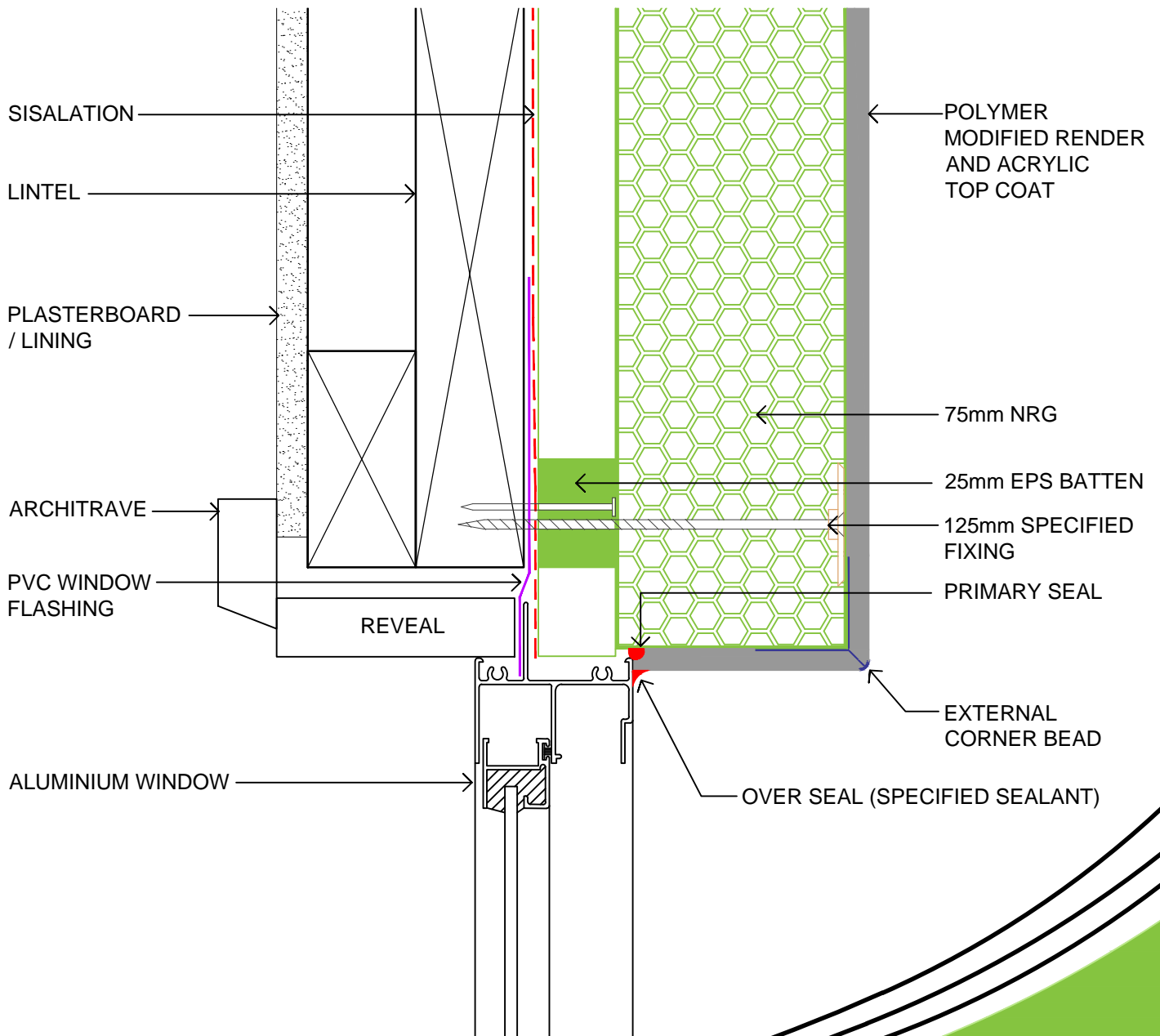
STEP 6

Render as per NRG specifications using NRG polymer modified bag render, fibreglass mesh followed by acrylic top coat.

NRG 75 CR
TIMBER FLOOR DETAIL
DETAIL 3.0



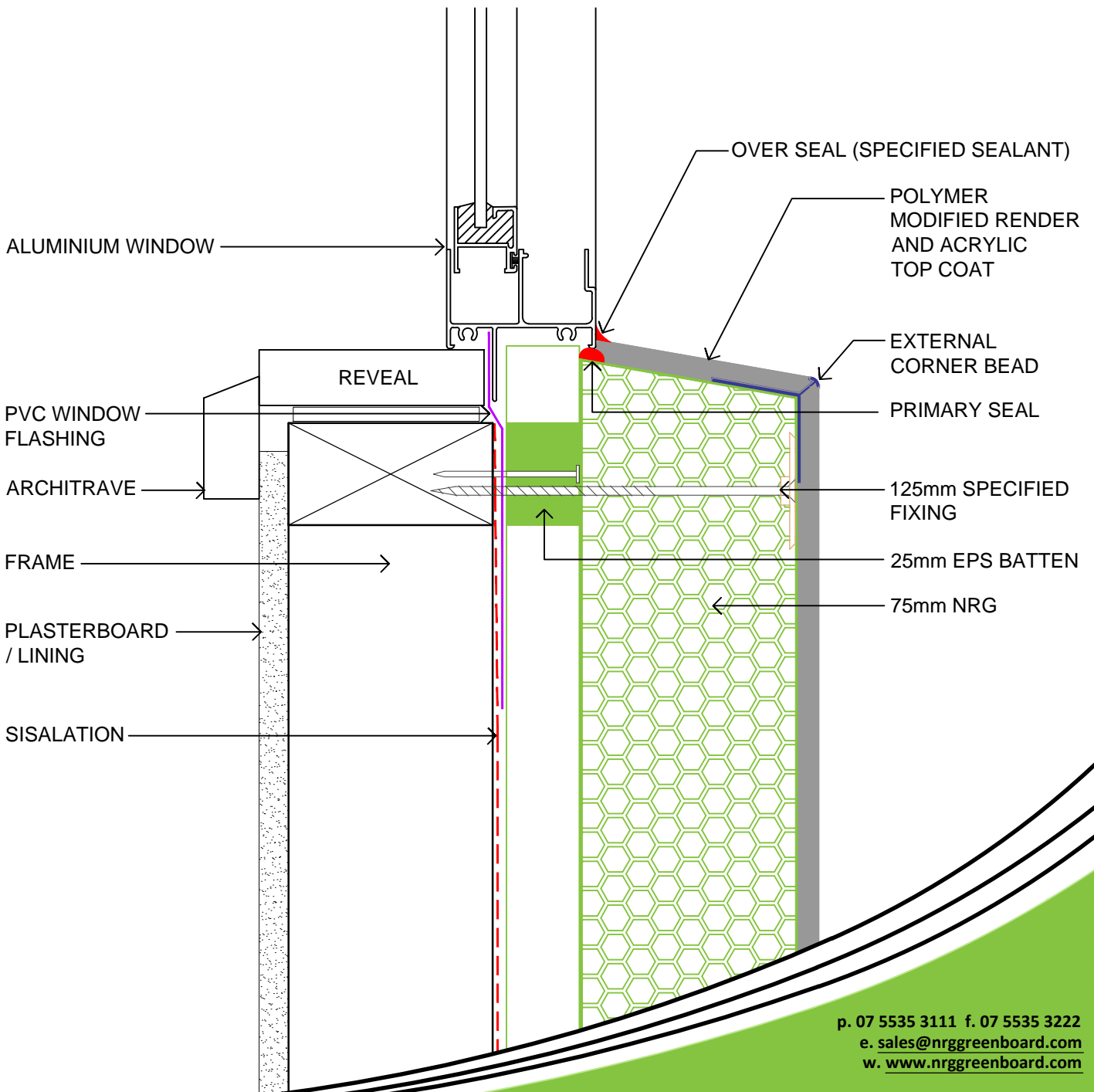
NRG 75 CR
HEAD & JAMB DETAIL
DETAIL 4.0



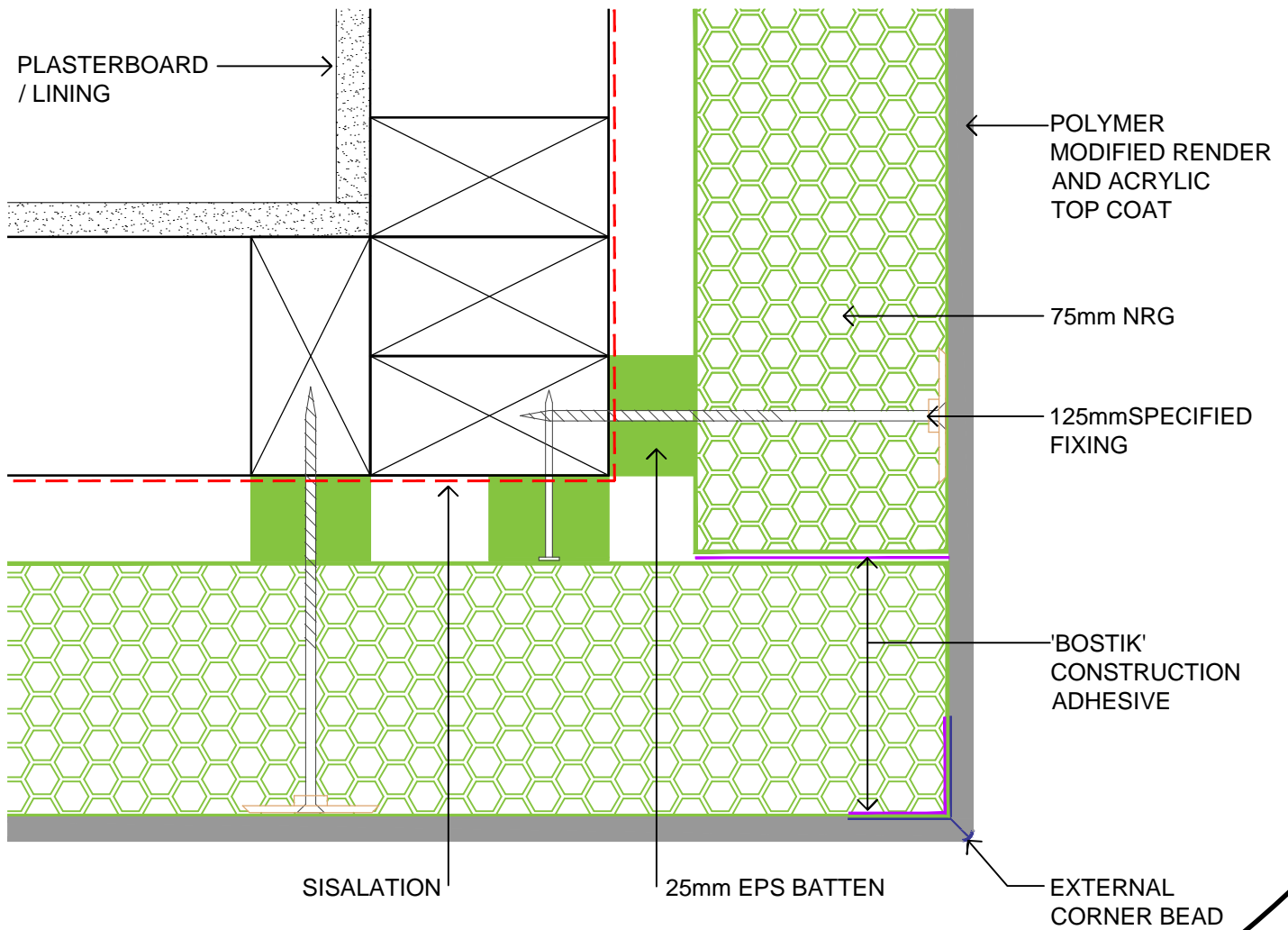
p. 07 5535 3111 f. 07 5535 3222
 e. sales@nrggreenboard.com
 w. www.nrggreenboard.com

PO Box 2405, Burleigh MDC QLD 4220
 Factory 4, 32-38 Dover Drive, West Burleigh QLD 4220

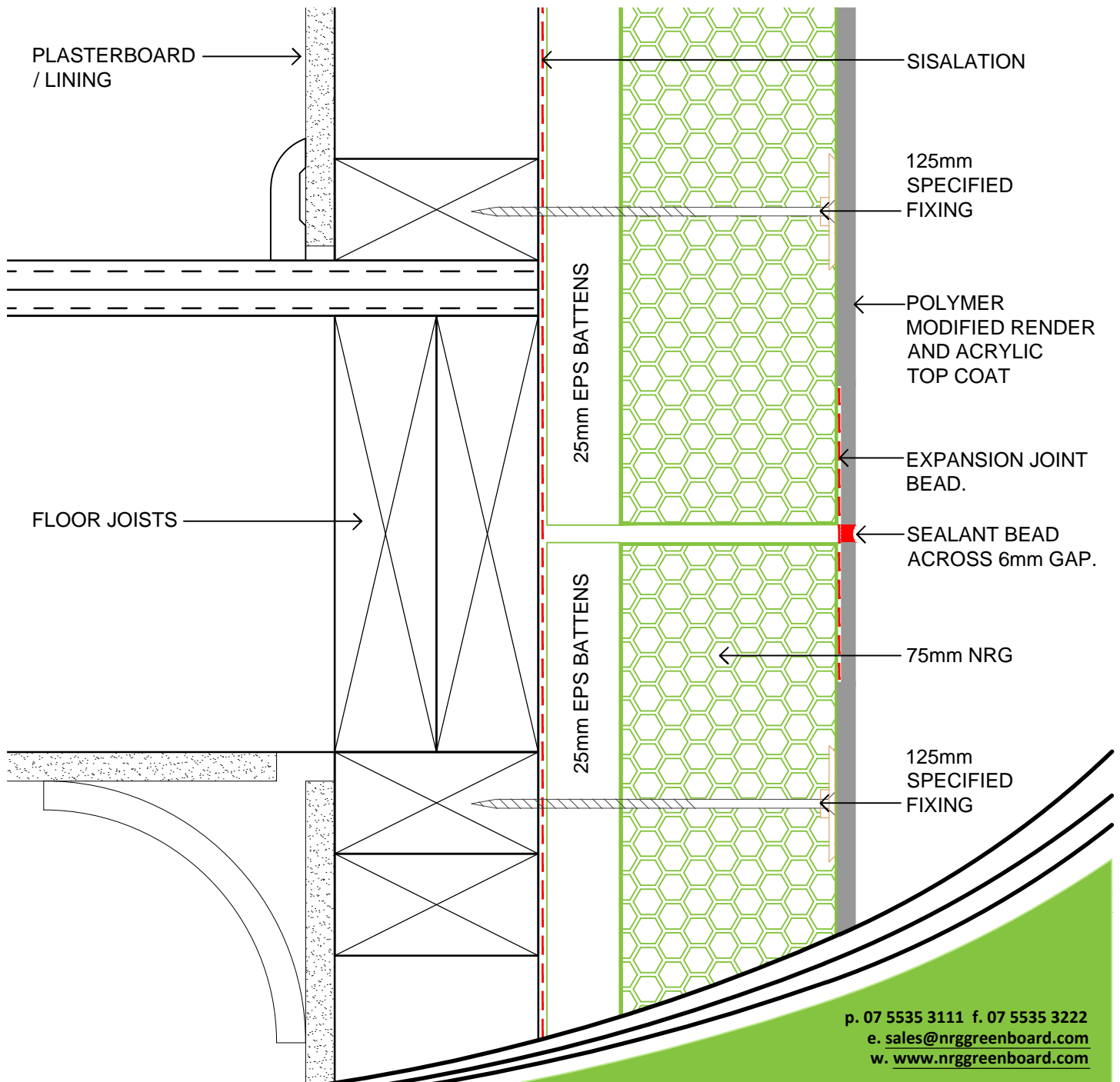
NRG 75 CR
WINDOW SILL DETAIL
DETAIL 5.0



NRG 75 CR
EXTERNAL CORNER DETAIL
DETAIL 6.0



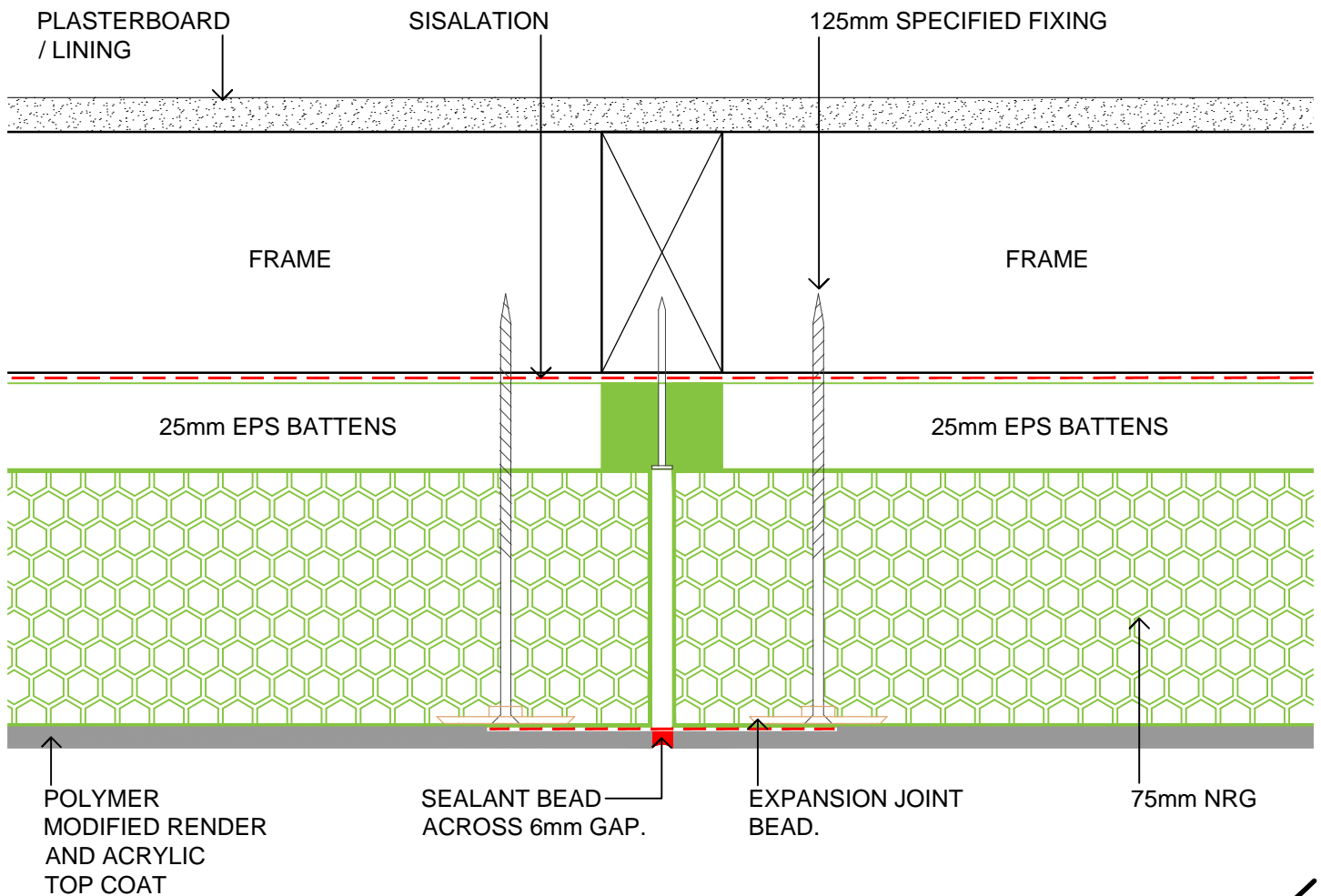
NRG 75 CR
HORIZONTAL EXPANSION JOINT DETAIL
DETAIL 7.0



p. 07 5535 3111 f. 07 5535 3222
 e. sales@nrggreenboard.com
 w. www.nrggreenboard.com

PO Box 2405, Burleigh MDC QLD 4220
 Factory 4, 32-38 Dover Drive, West Burleigh QLD 4220

NRG 75 CR
VERTICAL EXPANSION JOINT DETAIL
DETAIL 8.0



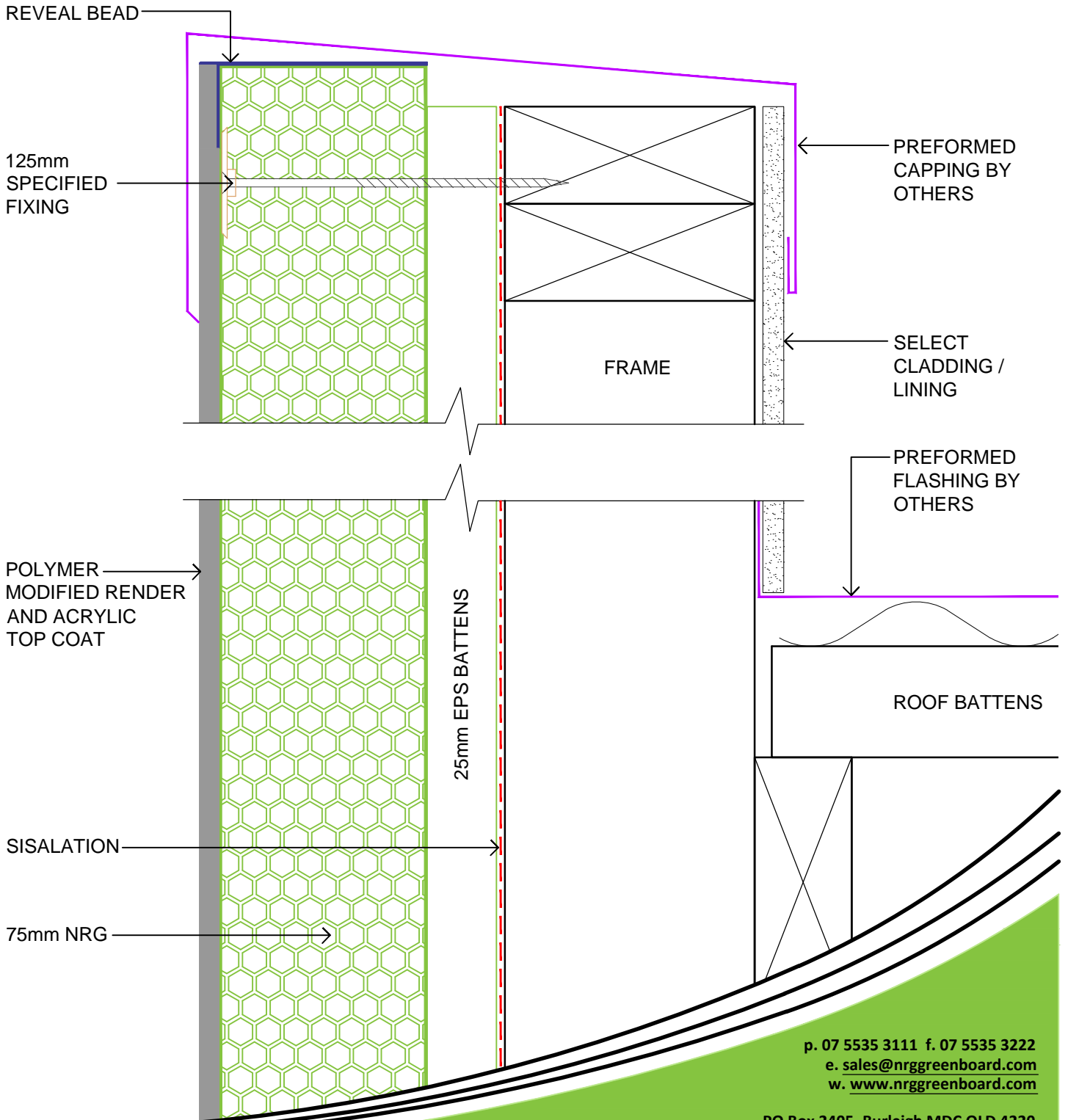
OPTION 2 EXPANSION JOINT DETAIL

- CHALK LINE AFTER RENDER / TEXTURE.
- 20mm CUT THROUGH RENDER AND INTO PANEL USING DIAMOND TIP BLADE.
- TAPE EITHER SIDE OF JOINT.
- SEAL WITH SEALANT.
- REMOVE TAPE AND PAINT.

p. 07 5535 3111 f. 07 5535 3222
 e. sales@nrggreenboard.com
 w. www.nrggreenboard.com

PO Box 2405, Burleigh MDC QLD 4220
 Factory 4, 32-38 Dover Drive, West Burleigh QLD 4220

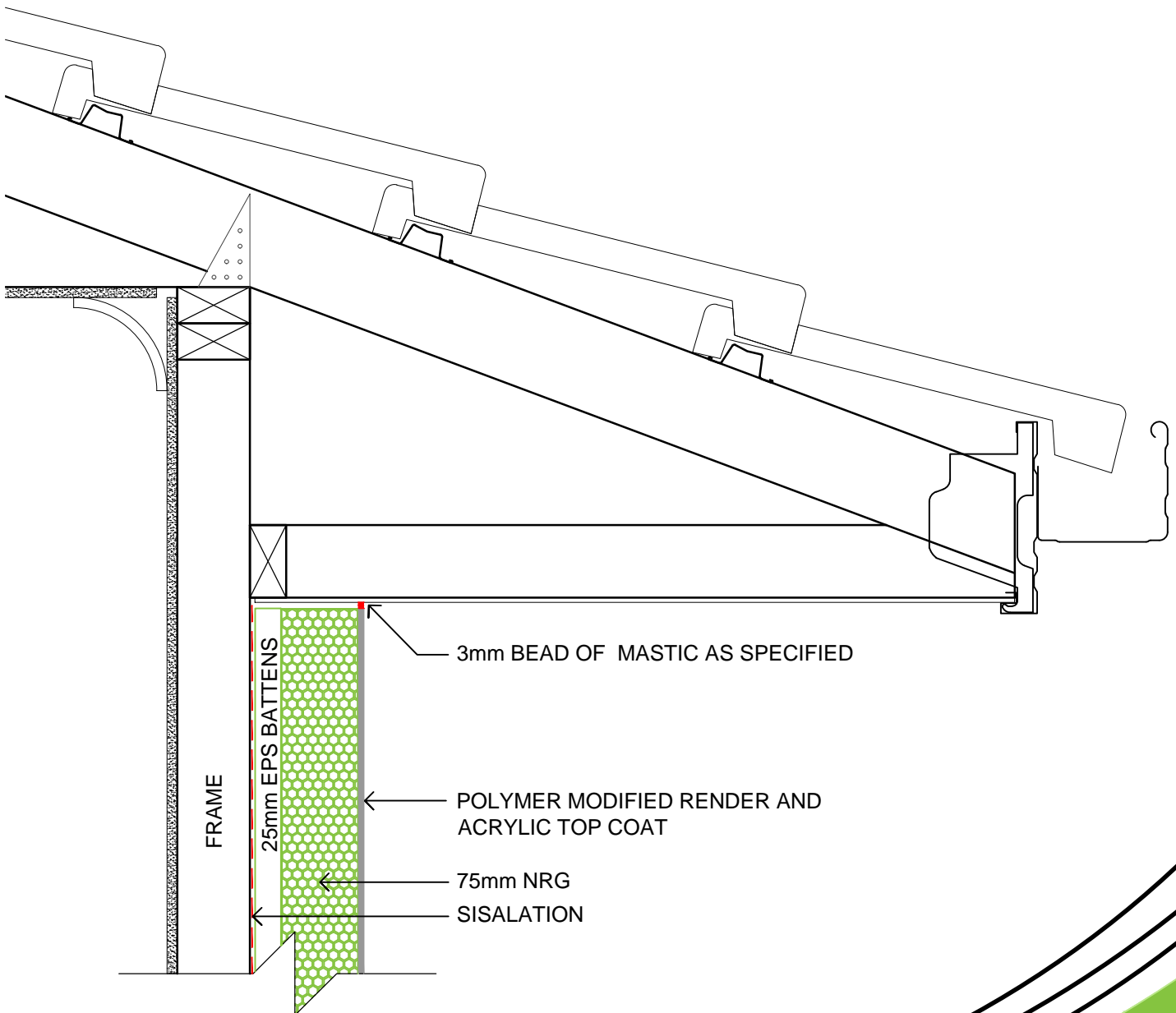
NRG 75 CR
PARAPET WALL DETAIL
DETAIL 9.0



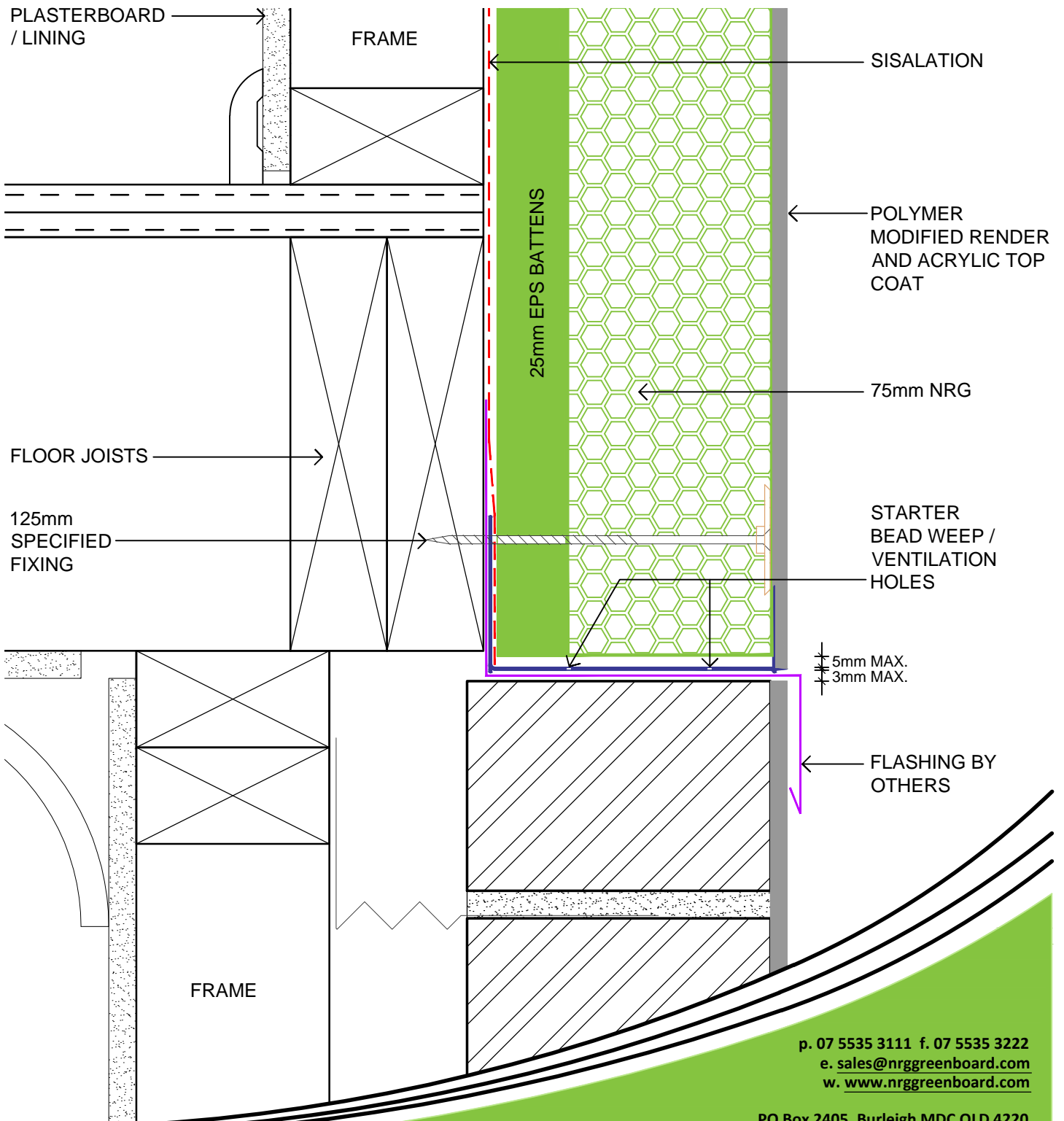
p. 07 5535 3111 f. 07 5535 3222
 e. sales@nrggreenboard.com
 w. www.nrggreenboard.com

PO Box 2405, Burleigh MDC QLD 4220
 Factory 4, 32-38 Dover Drive, West Burleigh QLD 4220

NRG 75 CR
SOFFIT DETAIL
DETAIL 10.0



NRG 75 CR
NRG / MASONRY JUNCTION DETAIL
DETAIL 11.0



p. 07 5535 3111 f. 07 5535 3222
 e. sales@nrggreenboard.com
 w. www.nrggreenboard.com

PO Box 2405, Burleigh MDC QLD 4220
 Factory 4, 32-38 Dover Drive, West Burleigh QLD 4220